

LL8897 - 5 Pack Deluxe Face Mask - Face Mask: Black

Screen Print  PMS XXXc

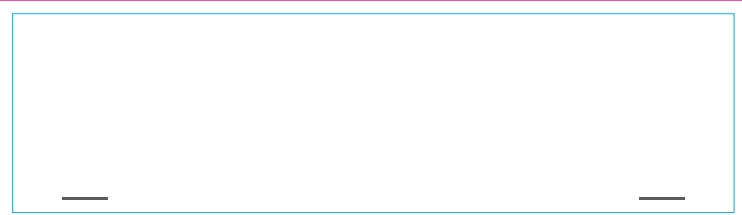
Nucolour Transfer 

Print colours available  White  Metallic Gold  Metallic Silver

Digital 

Label 

Note these are not medical grade devices - squeeze tight nose clip located at top of mask

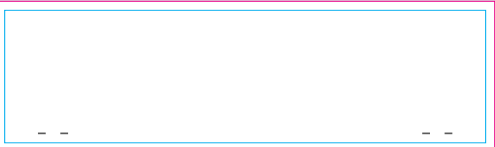


APPROX 60% OF SIZE

Special icons if required



APPROX 40% OF SIZE

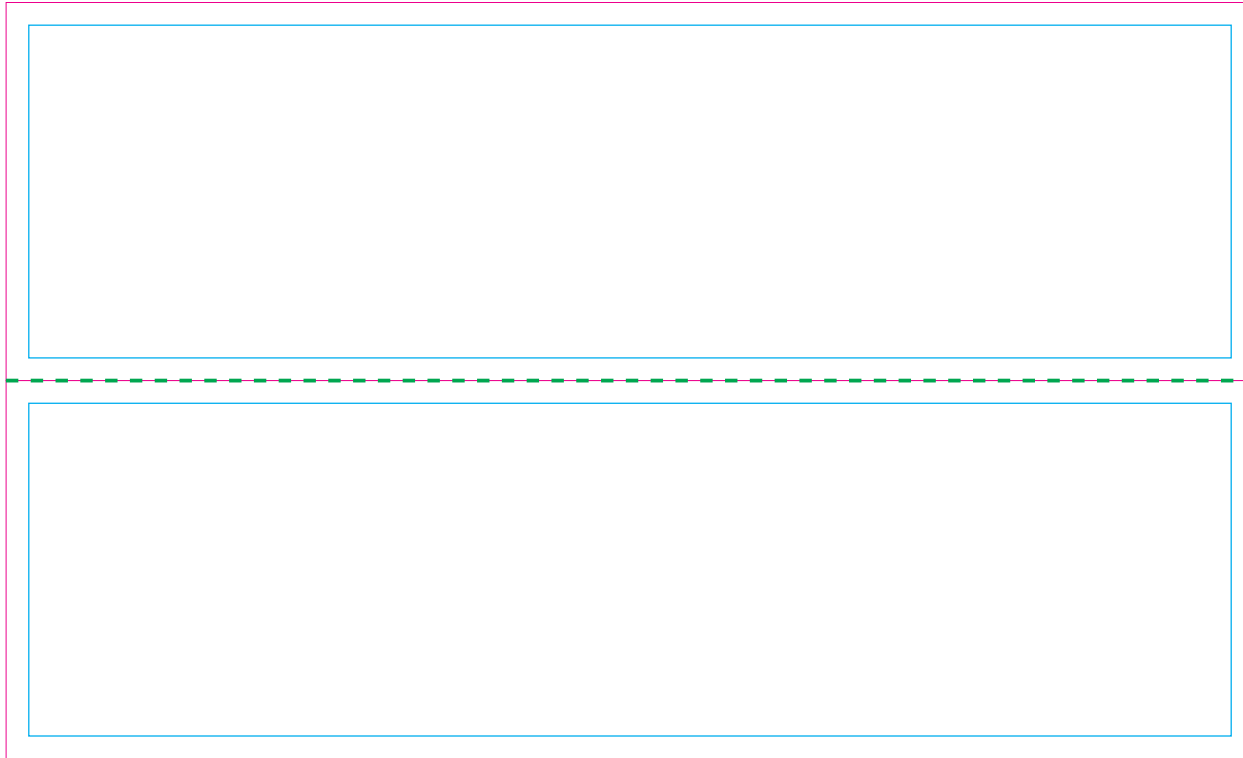


Label applied to back of polybag

REUSABLE FACE MASK: NON-MEDICAL
SPECIFIC USES:
Material: 3 Layers of 100% Cotton. Elastic straps.
Care Instructions: Wash hands and avoid touch with
respirator and eye thoroughly. Avoid eye contact.
Using Instructions:
1. Place both hands on the inside of the mask and stretch it over your head.
2. Place mask over nose and mouth and compress headband to
adjust fit.
3. Adjust mask to fit your face. MADE IN CHINA

INTERNAL USE ONLY INT: _____ Rpt SO: _____ Rpt Pte: _____ New Pte: _____ QC: _____ Q: _____ S: _____ E: _____ R: _____ PHOTO Int: _____
Prep: _____ Prt Int: _____ Info: _____ U/P Int: _____ R/P Int: _____ FS STK: _____
Ctns: _____ Wt(kgs): _____ D: _____ Ctns: _____ Wt(kgs): _____ D: _____ Total Ctns: _____ Total wt (kgs) _____

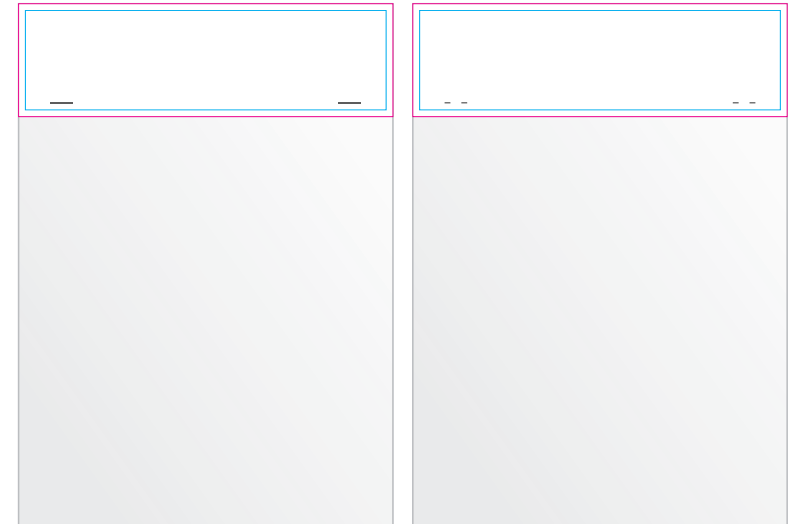
Digital



BELOW IS APPROX 30% OF SIZE

Side 1

Side 2



Bag Header - Side 1

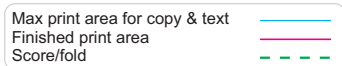
Print Area: 165mmL x 100mmH

Actual print size: xxmmL x xxmmH

Bag Header - Side 2

Print Area: 165mmL x 100mmH

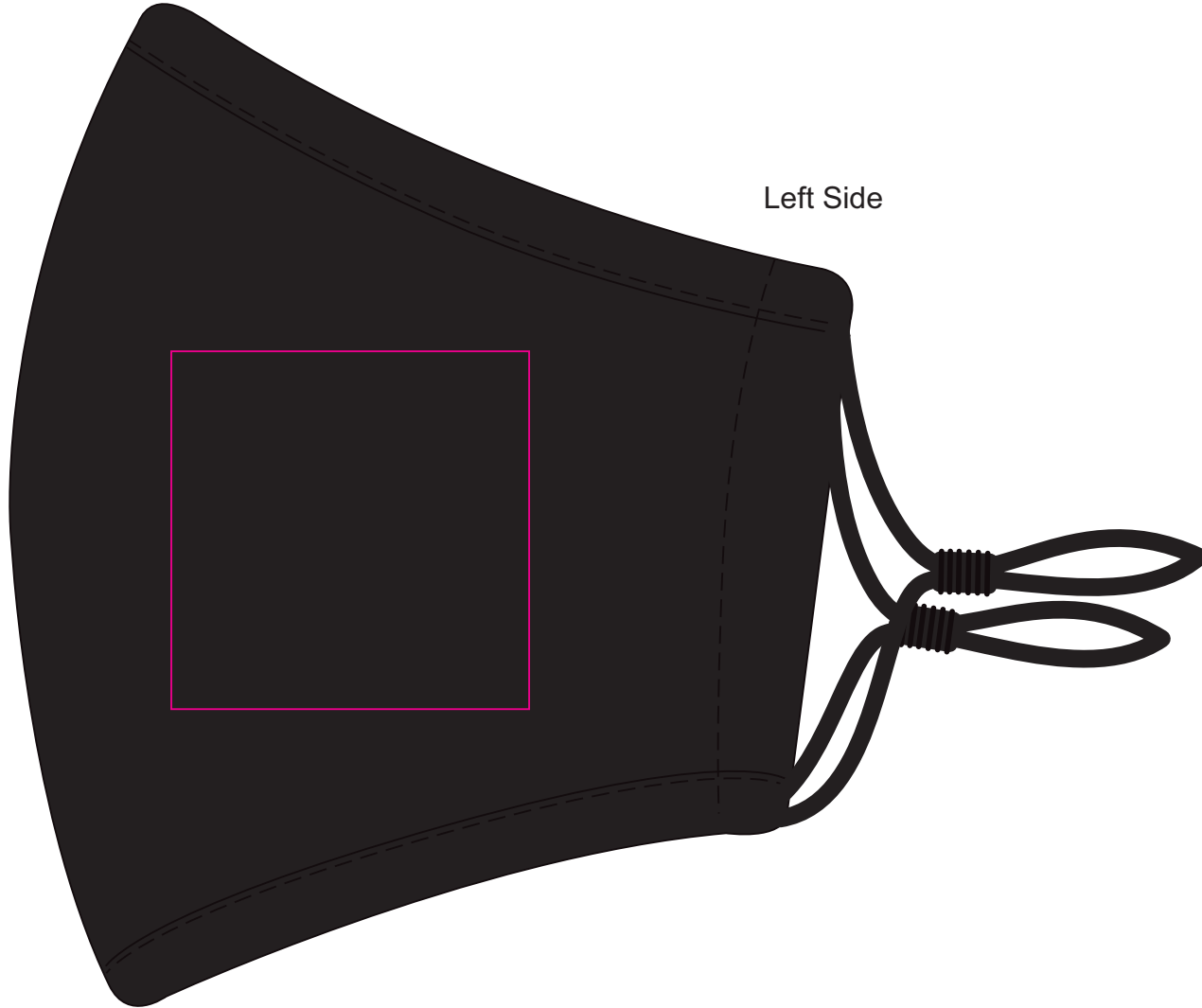
Actual print size: xxmmL x xxmmH



Screen Print  PMS XXXc

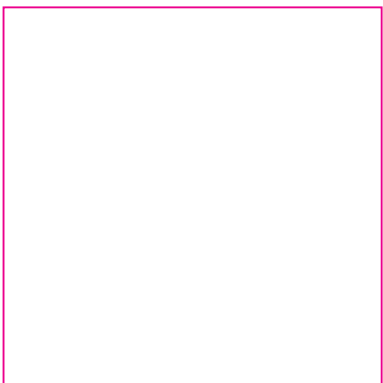
Nucolour Transfer 

Print colours available  White  Metallic Gold  Metallic Silver

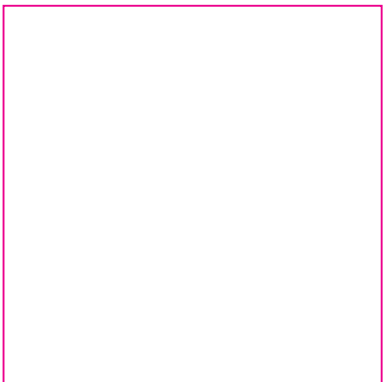


Left Side

Design at 100% size.



White Layer.



Screen/Nucolour
Print Area: 50mmL x 50mmH
Actual print size: xxmmL x xxmmH

Finished print area 