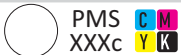
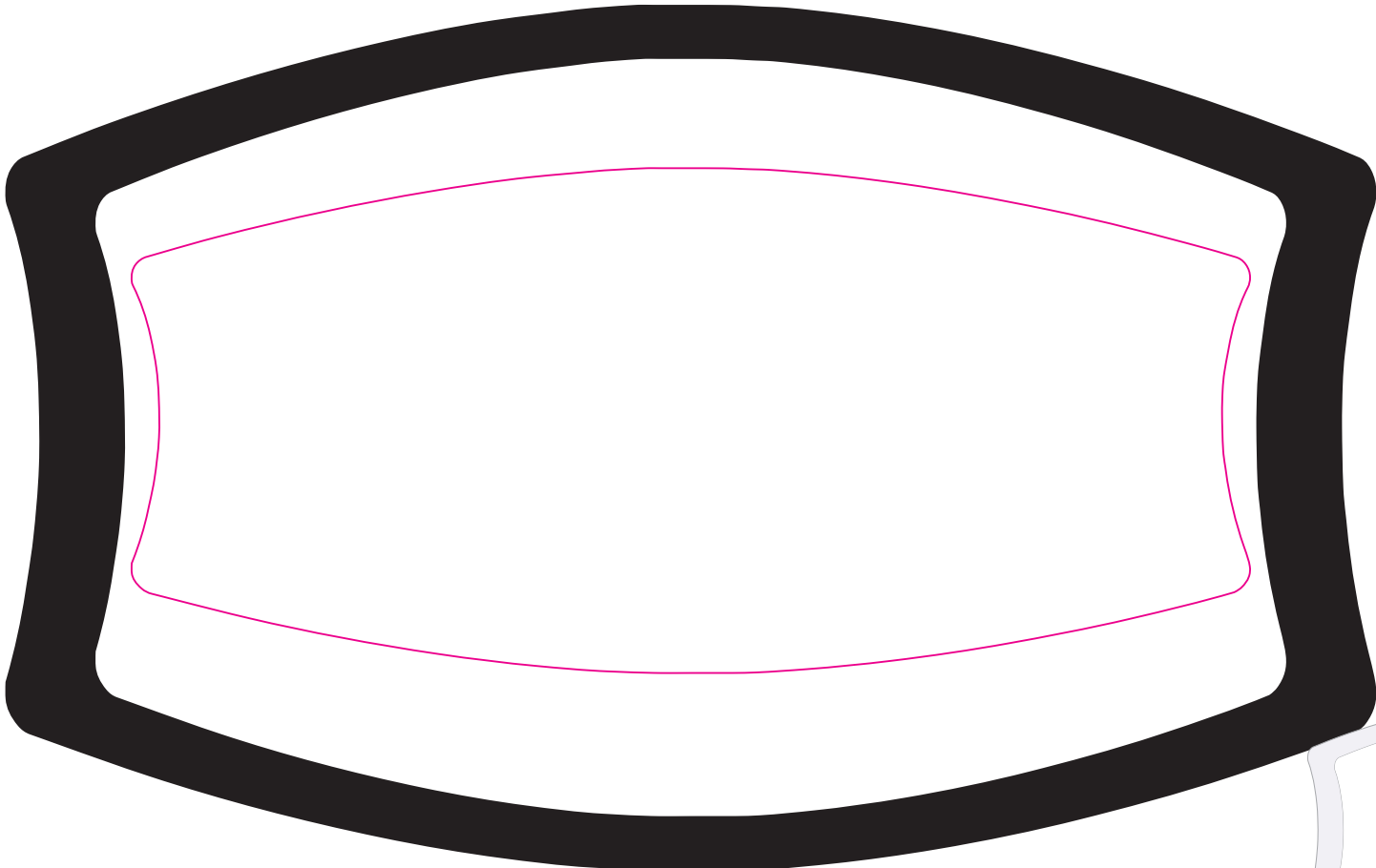


**LN8890 - Cotton Face Mask - Black/White or White**

Heat Transfer



Note these are not medical grade devices



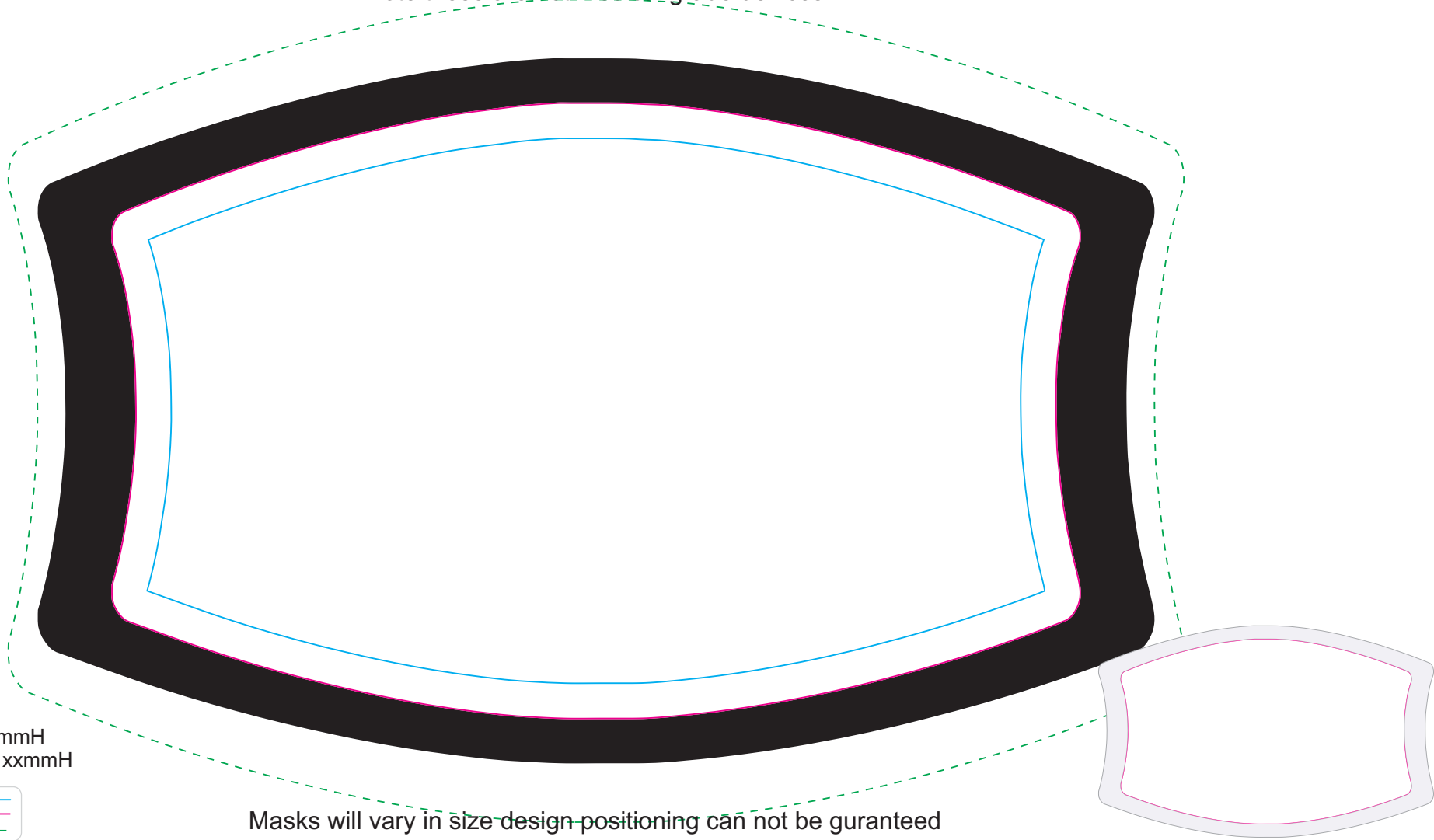
Print Area: 155mmL x 70mmH  
Actual print size: xxmmL x xxmmH

Finished print area 




**LN8890 - Cotton Face Mask - Black/White or White**

Sublimation 

Note these are not medical grade devices



Print Area: 165mmL x 105mmH  
Actual print size: xxmmL x xxmmH

Max print area for text and copy   
Finished print area   
Bleed 

Masks will vary in size design-positioning can not be guranteed