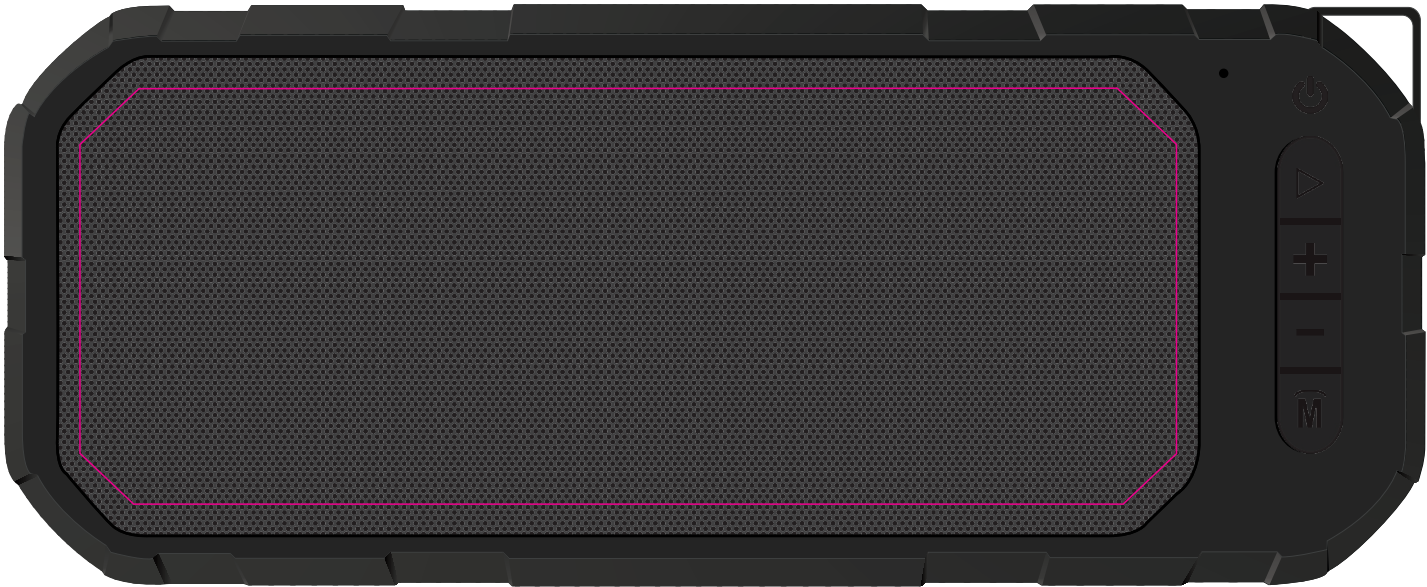


LL9456 - Havoc Water Resistant Speaker - Black



Holes in grill will overpower the design and make text/some details hard to read



Print Area: 145mmL x 55mmH
Actual print size: xxmmL x xxmmH
14pt text required as a minimum

Finished print area

LL9456 - Havoc Water Resistant Speaker with Label - Black

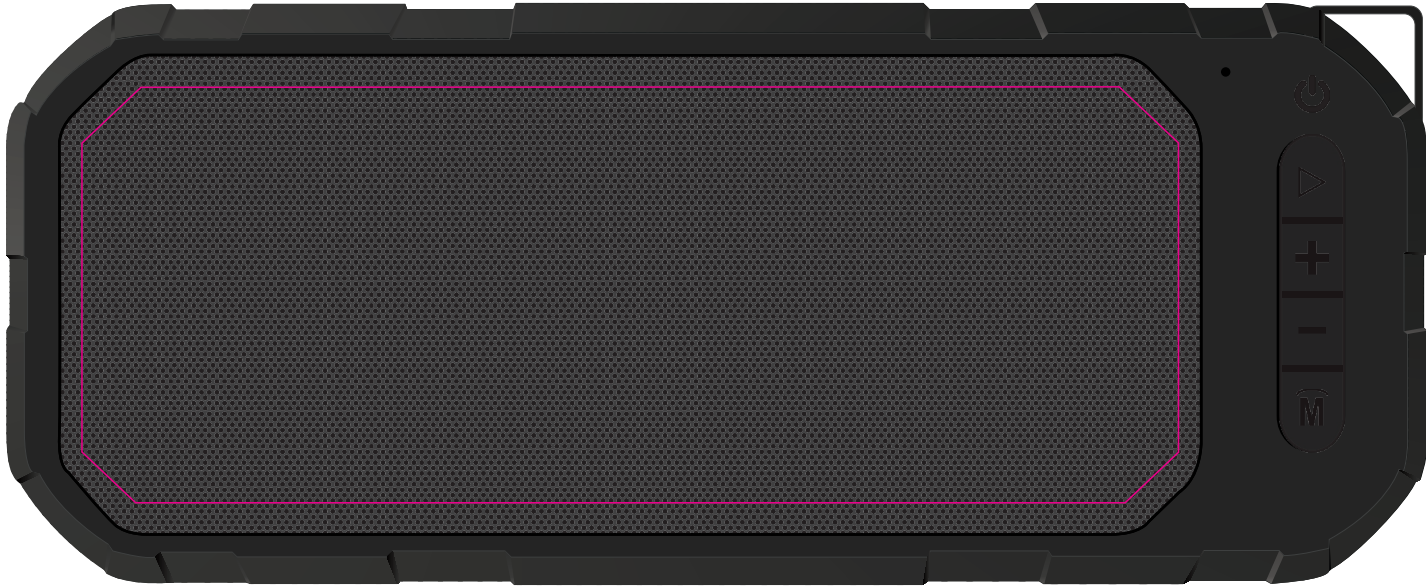
CMYK Direct Digital



CMYK Label

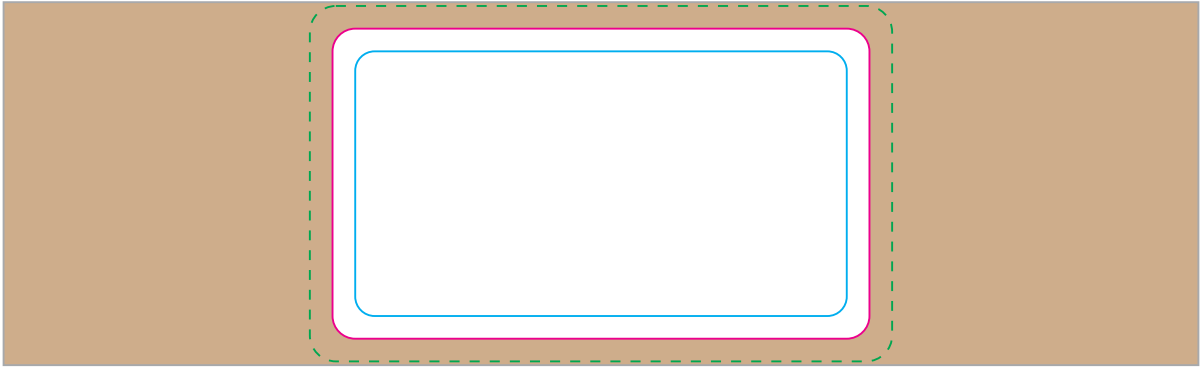


Holes in grill will overpower the design and make text/some details hard to read



Digital
Print Area: 145mmL x 55mmH
Actual print size: xxmmL x xxmmH
14pt text required as a minimum

Label
Print Area: 71mmL x 41mmH
Actual print size: xxmmL x xxmmH



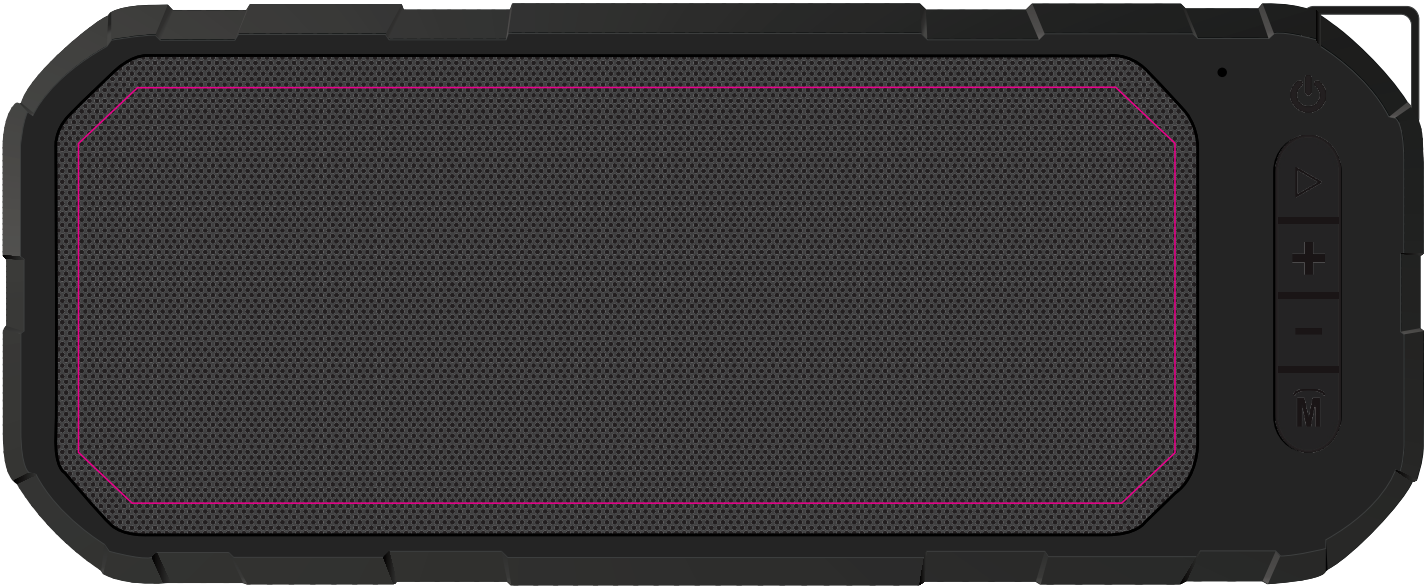
Max print area for copy & text
Finished print area - *Digital/Label*
Bleed line



LL9456 - Havoc Water Resistant Speaker with Sleeve - Black + Sleeve

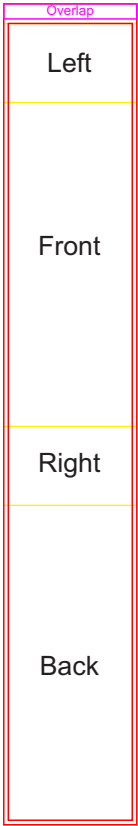


Holes in grill will overpower the design and make text/some details hard to read



Print Area: 145mmL x 55mmH
Actual print size: xxmmL x xxmmH
14pt text required as a minimum

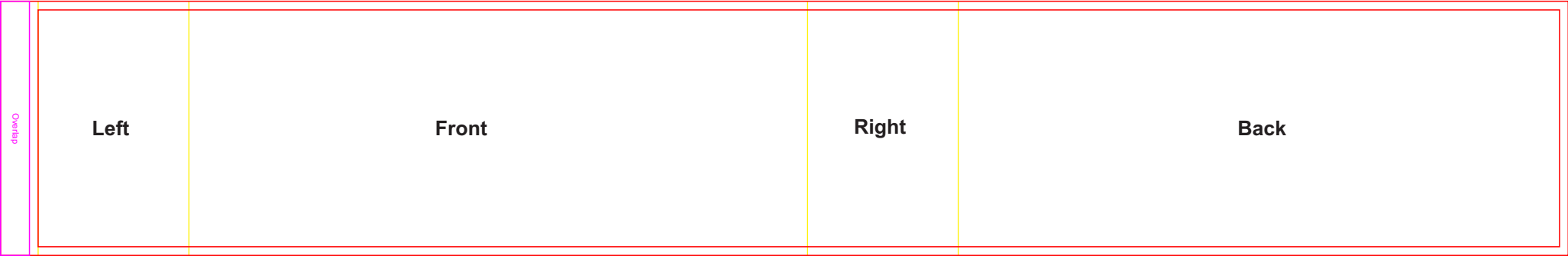
Finished print area



Sleeve
Print Area: 542.8mmL x 88mmH
Actual print size: xxmmL x xxmmH

Max print area for copy & text
Finished print area
Folds

Showing at approx 50% of actual size



Sleeve
Print Area: 542.8mmL x 88mmH
Actual print size: xxmmL x xxmmH

Max print area for copy & text

Finished print area

Folds